

## 2 Hathaway Court

Alcester Road, Stratford-upon-Avon, Warwickshire, CV37 6HH



**PRICE: £155,000**

**Lease: 125 years from 2007**

### Property Description:

**A ONE BEDROOM TRIPLE ASPECT RETIREMENT APARTMENT LOCATED ON THE GROUND FLOOR WITH DIRECT ACCESS ONTO COMMUNAL GARDENS AND BENEFITING FROM A STUDY AREA OFF THE HALLWAY**

Hathaway Court is in a prime location of Stratford Upon Avon. Local amenities are in easy walking distance including Doctors Surgery, local shops and train station. Within short walk you are in the beautiful town centre with all the delights Stratford has to offer. Constructed by McCarthy & Stone (Developments) Ltd and comprises 54 properties arranged over 4 floors each served by a lift. The resident Development Manager can be contacted from various points within each property in the case of an emergency. In addition to the Development Manager there is the added security of emergency Appello call system, which is an emergency monitoring centre providing a response 24 hours a day, 365 days a year, for periods when the House Manager is off duty. Each property comprises an entrance hall, lounge, kitchen, one or two bedrooms and bathroom. It is a condition of purchase that residents be over the age of 60 years, or in the event of a couple, one must be over the age of 60 years and the other over 55 years. Please speak to our Property Consultant if you require information regarding "Event Fees" that may apply to this property.

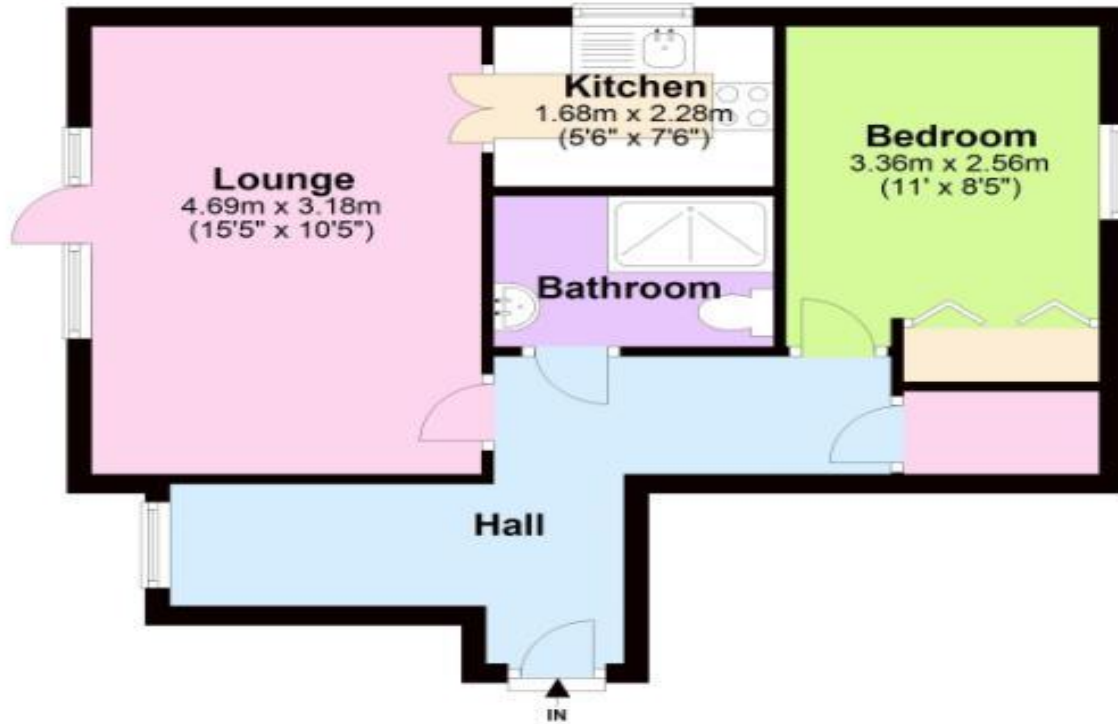
- Development Manager
- Lift
- Communal Lounge
- 24 hour Appello Response System & CCTV
- Communal gardens
- Minimum Age 60
- Communal Laundry and Guest Room
- To include carpets, curtains and light fittings
- Lease 125 years from 2007



**For more details or to make an appointment to view, please contact  
Charlotte Harvey**

**Flat**

Approx. 42.7 sq. metres (459.6 sq. feet)



Total area: approx. 42.7 sq. metres (459.6 sq. feet)

This floor plan is for illustrative purposes only and is not to scale. Where measurements are shown, these are approximate and should not be relied upon. Total square area includes the entirety of the property and any outbuildings/garages. Sanitary ware and kitchen fittings are representative only and approximate to actual position, shape and style. No liability is accepted in respect of any consequential loss arising from the use of this plan. Reproduced under licence from Evolve Partnership Limited. All rights reserved.

Plan produced using PlanUp.

Energy Efficiency Rating		
	Current	Potential
<i>Very energy efficient - lower running costs</i>		
(92-100) <b>A</b>		
(81-91) <b>B</b>		86
(69-80) <b>C</b>	73	
(55-68) <b>D</b>		
(39-54) <b>E</b>		
(21-38) <b>F</b>		
(1-20) <b>G</b>		
<i>Not energy efficient - higher running costs</i>		
<b>England, Scotland &amp; Wales</b>		EU Directive 2002/91/EC

**For Financial Year Ending:**

**28/2/25**

**Annual Ground Rent:**

**£425.00**

**Ground Rent Period Review:**

**Next Uplift 2030**

**Annual Service Charge:**

**£2,973.52**

**Council Tax Band:**

**D**

**Event Fees:**

**1% Transfer**

**1% Contingency**

Retirement Homesearch, Queensway House, 11 Queensway, New Milton, Hampshire, BH25 5NR  
T: 0333 321 4060 F: 0333 321 4065 E: enquiries@retirementhomesearch.co.uk

Retirement Homesearch Limited, Registered Office:  
Queensway House, 11 Queensway, New Milton, Hampshire, BH25 5NR  
Registered in England No. 3829469



These sales particulars have been prepared as a guide only and any intended purchasers must satisfy themselves by inspection or otherwise as to the correctness of the statements contained therein. The management company have not tested any apparatus, equipment, fittings or services and so cannot verify that they are in working order.